



STATE OF NEW JERSEY
DEPARTMENT OF TRANSPORTATION

NJDOT Pavement Rehabilitation Strategies

By Robert J. Blight

Principal Engineer

Pavement Management & Technology

Pavement Rehab Goals

- Improve Pavement Condition
- Improve Ride Quality
- Improve Safety
- Extend Life
- Increase Structural Capacity
- Reduce Life Cycle Costs
- Increase Customer Satisfaction

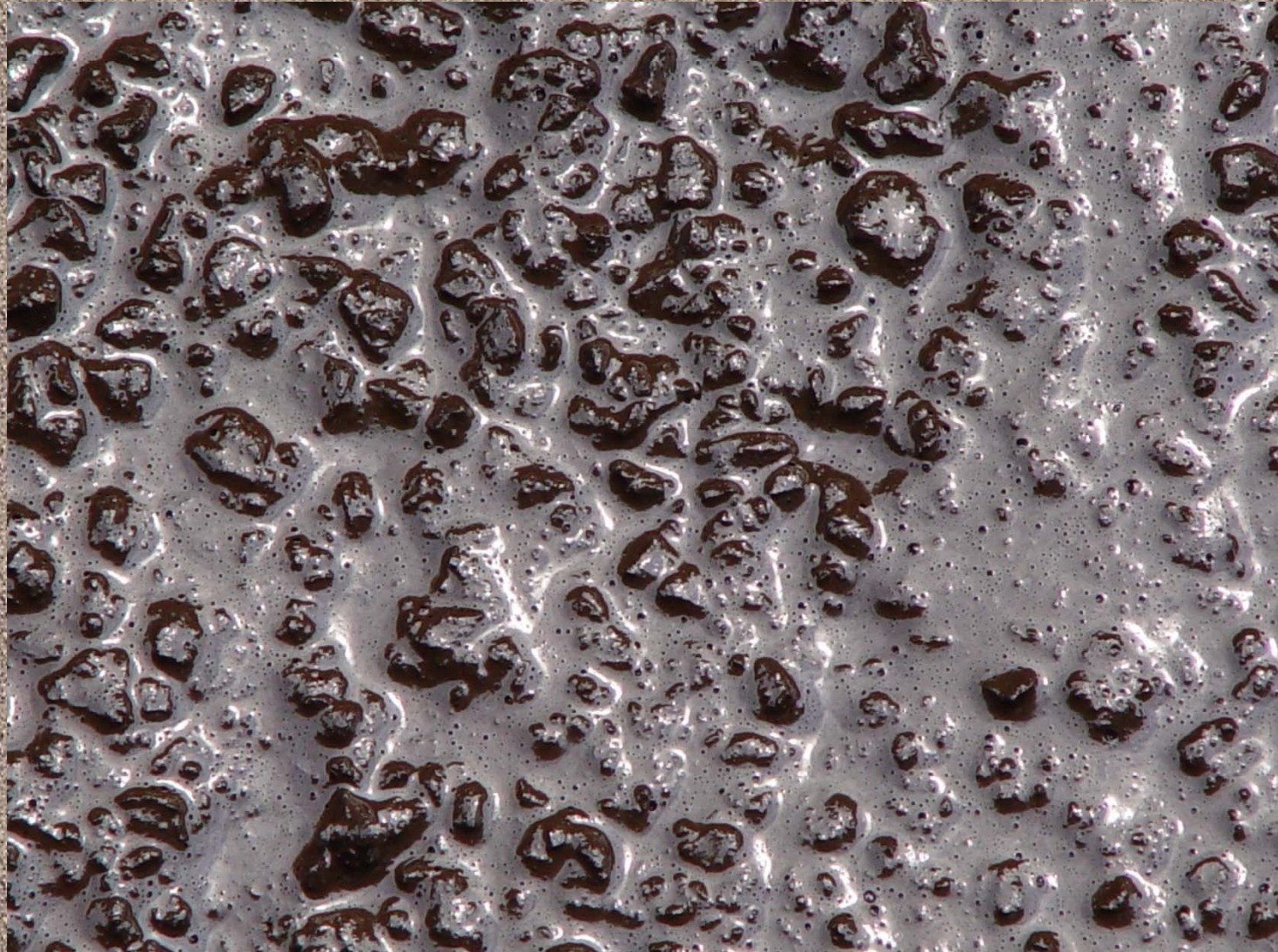
Flexible Rehab Strategies

- Micro-surfacing
- Thin Overlays
 - HMA Friction Courses
 - Ultra-Thin Friction Course (Novachip)
 - High Performance Thin Overlay

Micro-surfacing



Micro-surfacing



Asphalt Rubber Open Graded Friction Course



Ultra-Thin Friction Course (Novachip)

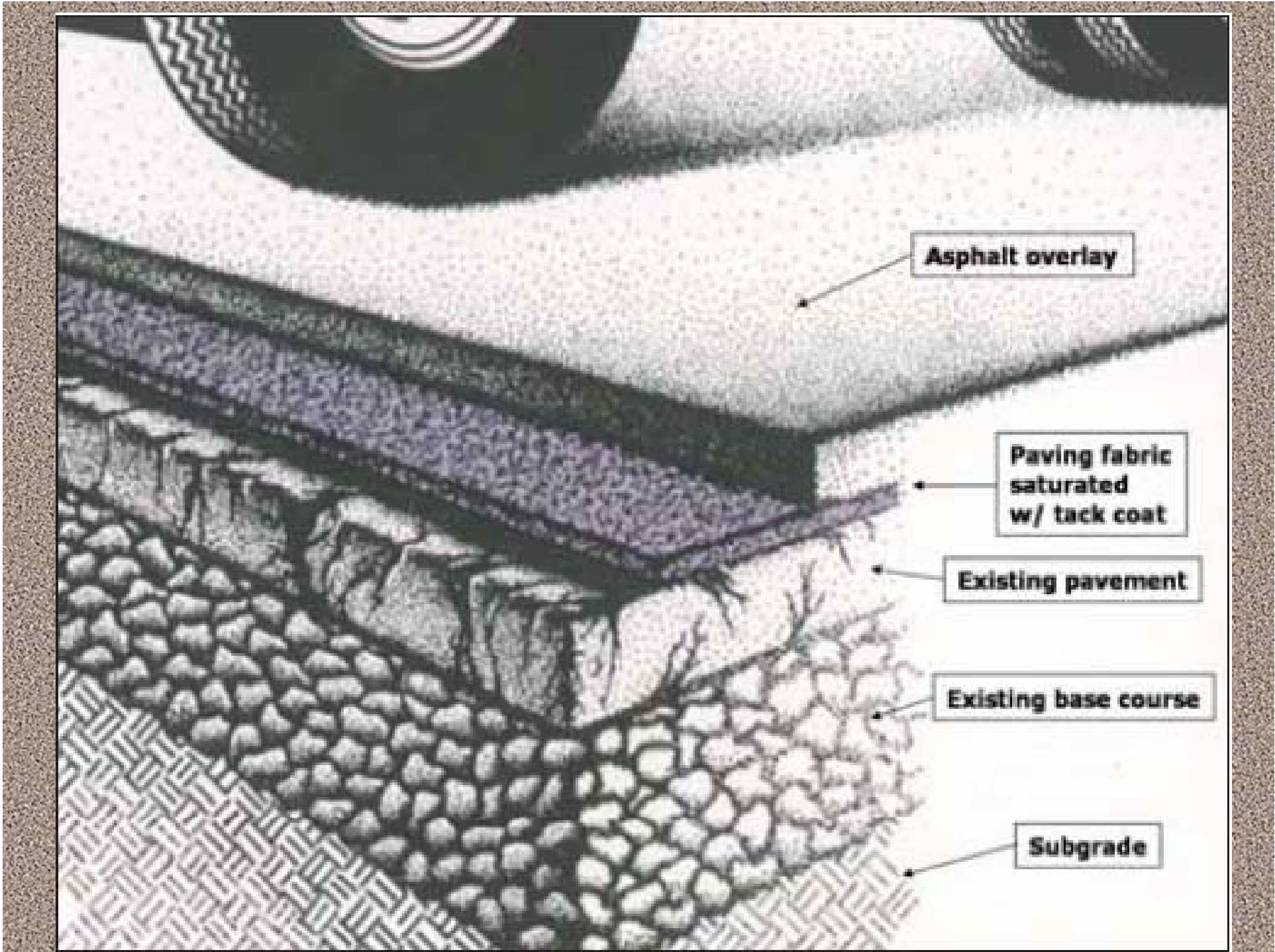


High Performance Thin Overlay



Flexible Rehab Strategies

- Mill and HMA Overlay
- Mill, Construct Paving Fabric & HMA Overlay
- Stone Matrix Asphalt SMA



Paving Fabric



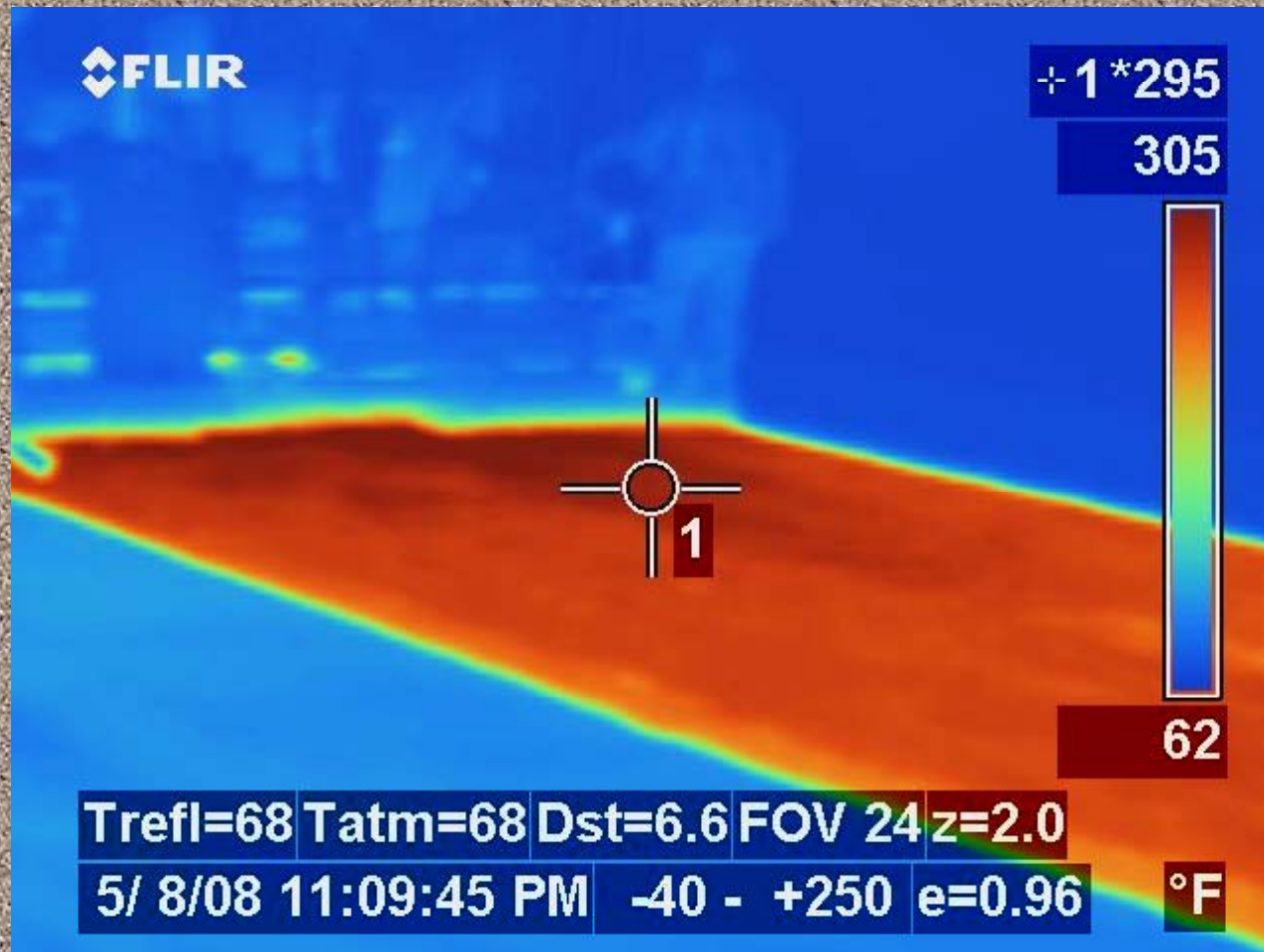
Paving Fabric



SMA 9.5mm Surface Course



SMA 9.5mm Surface Course



Concrete Pavement Rehab Strategies

- Slab Stabilization
- Partial Depth Repair
- Full Depth Repair
- Dowel Bar Retrofit and Crack Stitching
- Diamond Grinding
- Joint Resealing and Crack Sealing

Slab Stabilization, Polyurethane Grout



Slab Stabilization, Polyurethane Grout



Partial Depth Repair After Saw Cutting and Chipping



Partial Depth Repair with Portland Cement Concrete



Partial Depth Repair with TechCrete (Crafco Product)



Full Depth Concrete Repair

Cast In Place



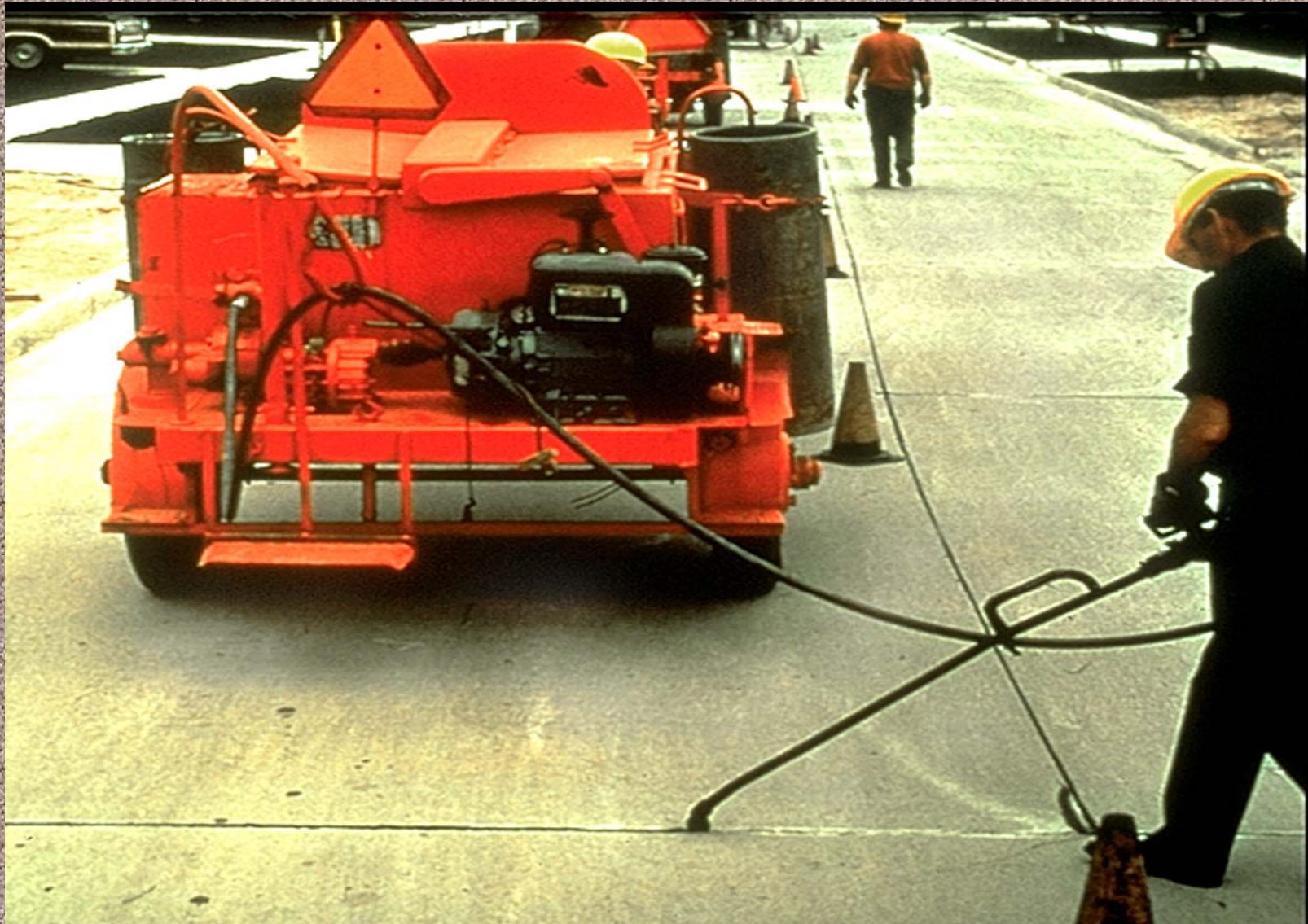
Precast and Dropped In



Diamond Grinding



Joint Resealing

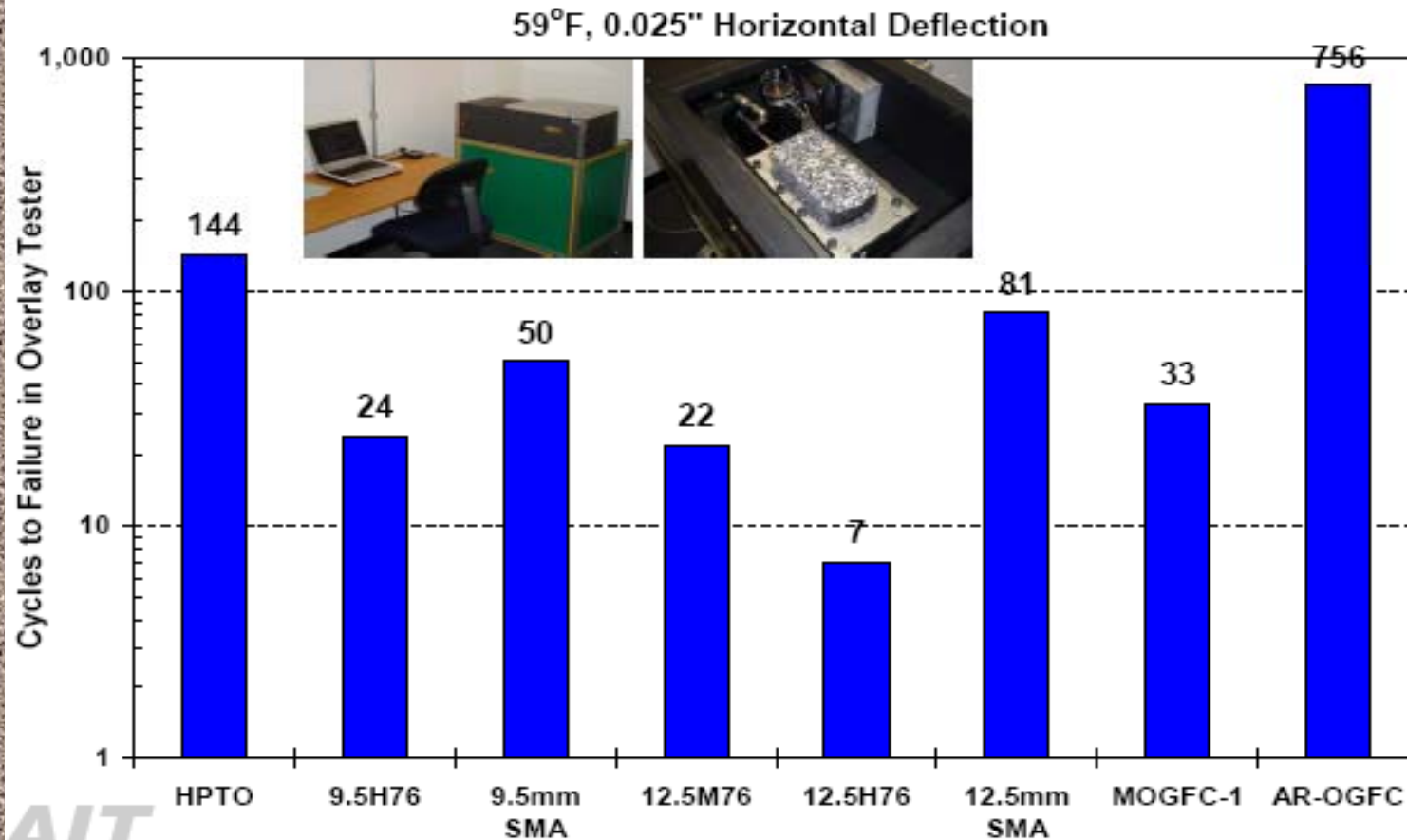


Composite Pavement Rehab Strategies

- Slab Stabilization
- Full Depth Repairs with HMA
- Use of Better Mixes
 - AROGFC
 - HPTO
 - SMA
 - Reflective Crack Relief Interlayer (RCRI)
 - XFB or Rosphalt 50

Overlay Tester Results

NJDOT Surface Course Mixes



Composite Pavement Rehab Strategies

- Rubblization and HMA overlay

Thank you. Questions?

Contact Info.:

Robert J. Blight
Principal Engineer
NJDOT
Civil Engineering - Pavement Management & Technology
Phone (609) 530-4445
Fax (609) 530-5550
email: robert.blight@dot.state.nj.us