



MaineDOT



Composites Presentation

By Nate Benoit, PE

MaineDOT Project Manager

**Amherst – Composite Invert Lining;
Route 9, West Branch ½ Mile Pond Brook**



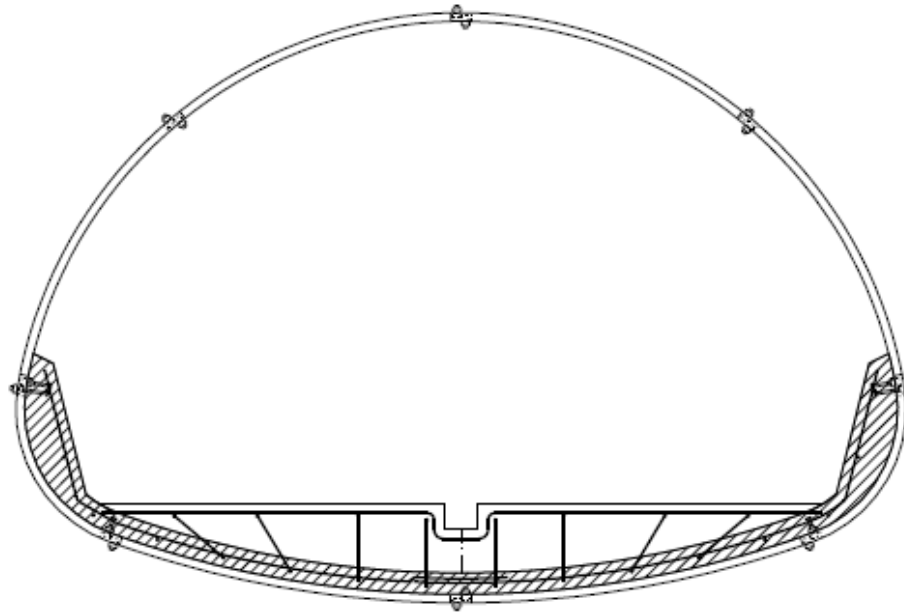
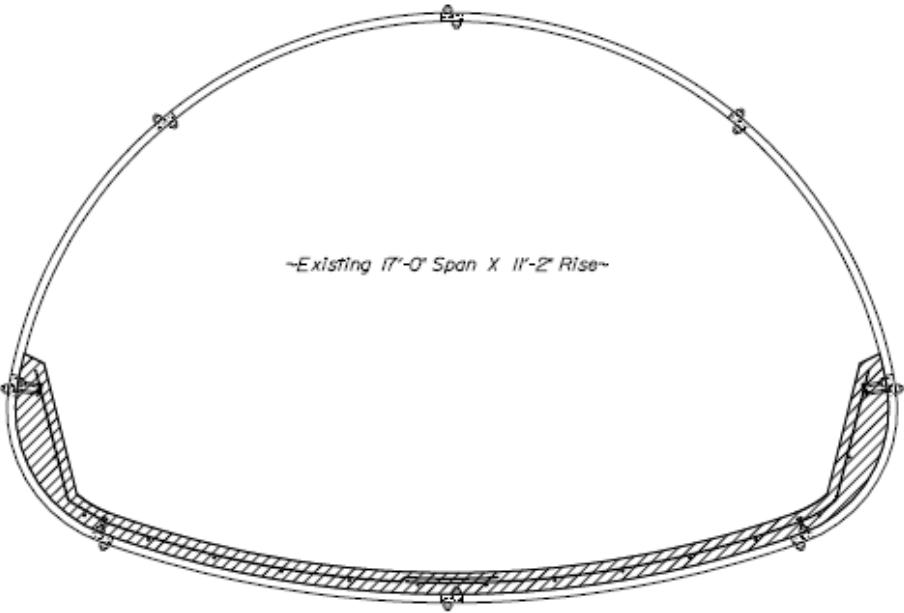


- **Contractor: Kenway Corporation**
 - Alex Thibodeau, Project Manager
- **Design, Analysis, and Testing: UMaine AEWC Advanced Structures and Composites Center**
 - Jacob Marquis, Senior Research Engineer
- **MaineDOT**
 - Mike Badger, Highway Maintenance
 - Randy Gray, Highway Maintenance
 - Roland Cote, Engineer
 - Devin Anderson, Team North Project Manager
 - Mike Wight, Senior Structural Designer
 - Brian Marquis, Inspector
 - Rich Gebert, Resident



**KENWAY
CORPORATION**

Concrete Invert Liner



PIPE ARCH SECTION









REACTION FRAME PART
DO NOT TOUCH

Warning
Do not touch the specimen
Do not touch the reaction frame
Do not touch the load cell

Warning
Do not touch the specimen
Do not touch the reaction frame
Do not touch the load cell





COMMERCIAL GRADE
QUIKRETE

Hydraulic
WATER-STOP CEMENT

Cemento hidráulico impermeabilizante

Just-Add-Water

Quikrete, high strength masonry material designed to
be used for masonry and concrete walls,
foundations, and for sealing around
pipes.

For mixing water in 1 to 5 gallons
per 50 lb. bag of Quikrete
masonry mix.



**WARNING: CAN CAUSE SERIOUS DAMAGE
TO SKIN AND EYES**
See additional precautions and first aid on back panel.

**ADVERTENCIA: PUEDE CAUSAR LESIONES
GRAVES A LA PIEL Y A LOS OJOS**
Ver precauciones adicionales y primeros auxilios en el reverso.

NET 20 LB (9.1 kg)





















































